

Leica ConX EarthMover

Take control of your earthmoving activities with EarthMover



icon
intelligent CONstruction

leica-geosystems.com



- when it has to be **right**

Leica
Geosystems



Leica ConX EarthMover – Controlled earthmoving, exactly as specified

Increase your productivity with Leica ConX and the EarthMover

Trucks, machines and personnel are expensive – delays, rework and penalties are costly. With Leica ConX you can increase machine uptime through remote access to your machine control units. With the EarthMover, the latest addition to ConX, you can monitor and streamline your earthmoving activities from one productivity platform.

Equip your truck drivers with an iPad, iPad mini or iPhone; then you can benefit from all these features from any internet connected computer, tablet or smartphone.

No complicated hardware installations or complex software solution – Leica ConX with the EarthMover is easy to use, flexible and powerful – just like that.

Take control of all the big cost for trucks, excavators, bulldozers and their operators, and most of all your success.



Your benefits at a glance:

- Avoid additional costs caused by delays, penalties and rework
- Increase site safety with less people on site around the machines
- Reduce the project's carbon dioxide footprint by reducing fuel consumption
- Mitigate project risks by identifying issues at an early stage and sharing information with stakeholders
- Improve project planning and execution by measuring your efficiency today and adjusting current processes

Additional advantages:

Fits perfectly into established workflows.
Easy-to-use, works on smart phones and tablets.
No need to replace existing software.

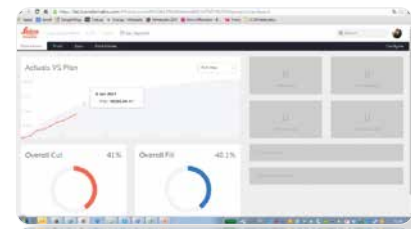
Understanding Construction

Sound information for decision-making and an optimum workflow in just a few steps

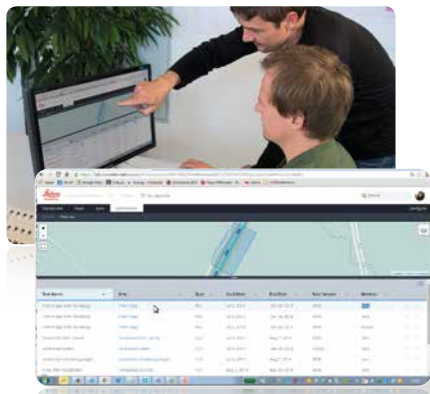
You simply need a Leica ConX account and the free driver's app for your haulage truck, and you can start monitoring your earthmoving operations in real-time.

Compare hauled volumes with planned activities

Make early and informed decisions as soon as a discrepancy exists between planned and actual. Track material movement to ensure the project adheres to specification.



Import planned Cut & Fill activities
 Import planned Cut & Fill activities into the EarthMover. Each activity contains information about geographical area, execution time and material type.



Planned activities
 ← Data for replanning

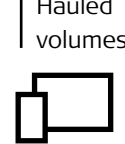


Stakeholder

- Staff on site
- Management
- Authorities

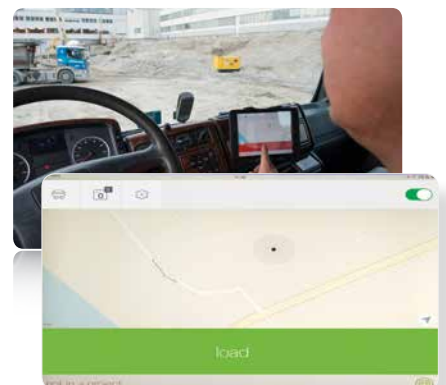
Share reliable information

Ensure that everyone has the latest information. This way you are in control, and can take appropriate action when required.



Collect haul volume information

Truck drivers use an iPad, iPad mini or iPhone to log position, time and material type of each load and dump. This information is automatically sent to the EarthMover in Leica ConX.





Leica Geosystems – when it has to be right

Revolutionising the world of measurement and survey for nearly 200 years, Leica Geosystems is the industry leader in measurement and information technologies. We create complete solutions for professionals across the planet. Known for innovative product and solution development, professionals in a diverse mix of industries, such as surveying and engineering, building and heavy construction, safety and security, and power and plant trust Leica Geosystems for all their geospatial needs. With precise and accurate instruments, sophisticated software, and trusted services, Leica Geosystems delivers value every day to those shaping the future of our world.

Leica Geosystems is part of Hexagon (Nasdaq Stockholm: HEXA B; hexagon.com), a leading global provider of information technology solutions that drive productivity and quality across geospatial and industrial landscapes.



Copyright Leica Geosystems AG, 9435 Heerbrugg, Switzerland. All rights reserved. Printed in Switzerland – 2017. Leica Geosystems AG is part of Hexagon AB. 832437en - 06.18



Leica ConX
Flyer



iCONtroll
Brochure